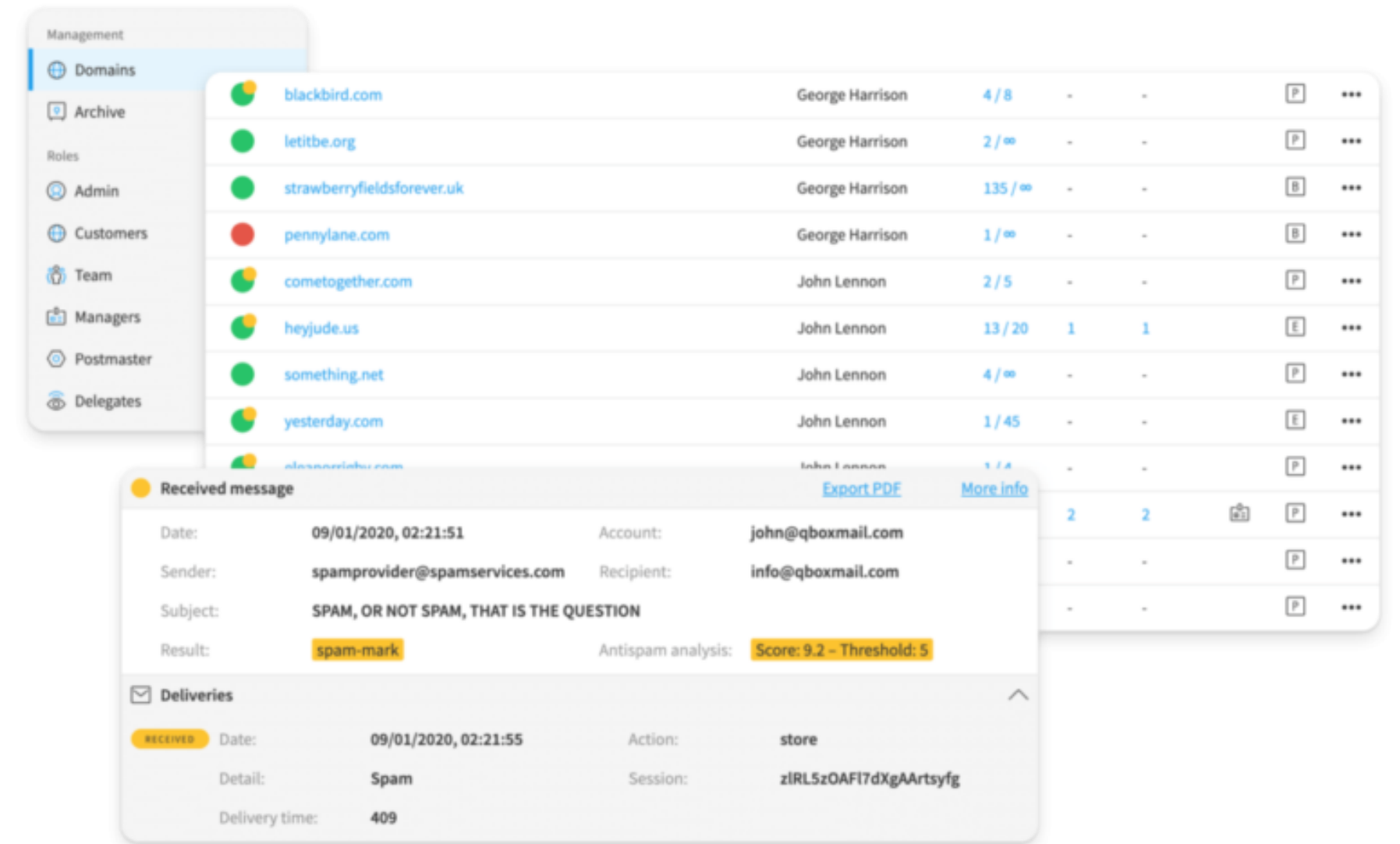


Manage **Business Emails**  
like a **Pro**

The Resellers Byte is pleased to bring this email solution under the name of **Global Email Solutions** (GMS) is powered by Qboxmail. We bring this state of the art advanced secured email solutions for our resellers to offer these solutions to their clients. It has all the added features yet much lower priced below are the detailed information.

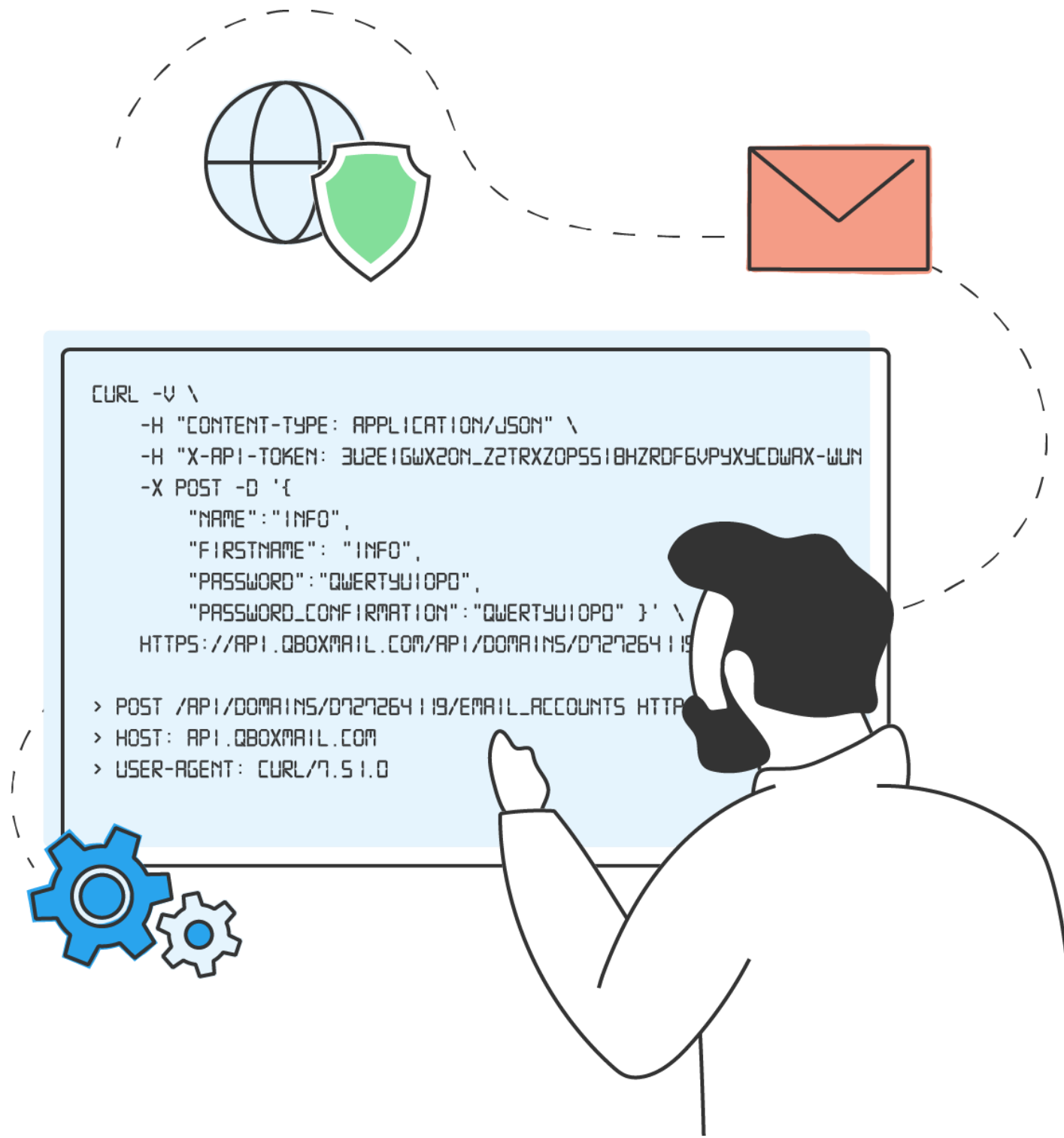




A **totally cloud** service which allows you to manage and use your accounts **anywhere** and makes your life easier

**Advanced** and always updated security tools. Choose the **security** level that best suits your accounts



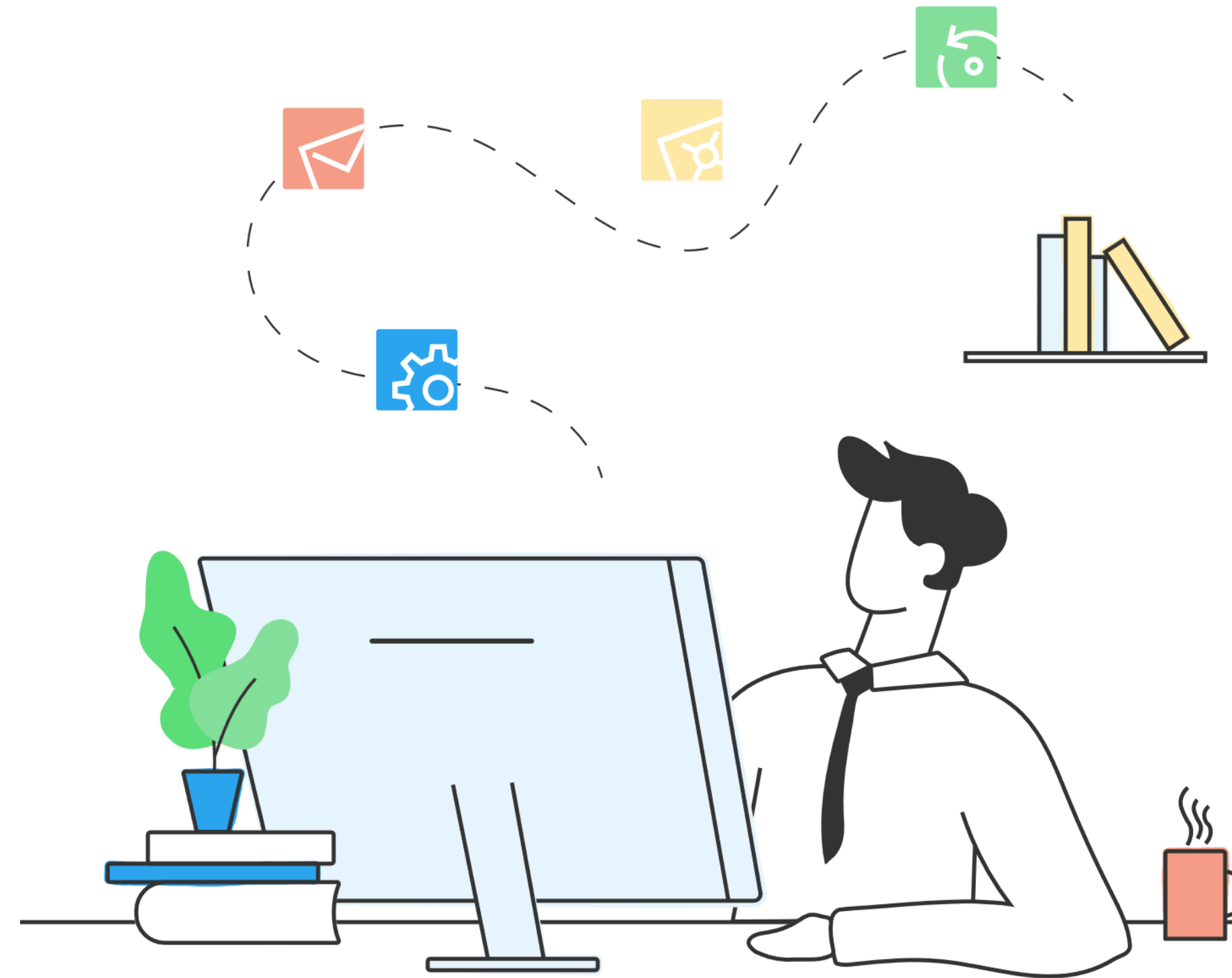


Integrate your products quickly and easily thanks to the full compatibility of the **Restfull API**

Emails are still the main **communication** tool for companies. Precisely for this reason we have decided to **develop** our communication suite, to make you work and collaborate in the best way.

*-Abdul Kader, CEO  
BTS Technology Ltd.*

# Our **Suite** for your communication



# With **Panel** you can manage all your accounts in a simple and centralized way


Account management from all devices

Delegate account management securely

Custom logo for each domain

Simple and fast account migrations

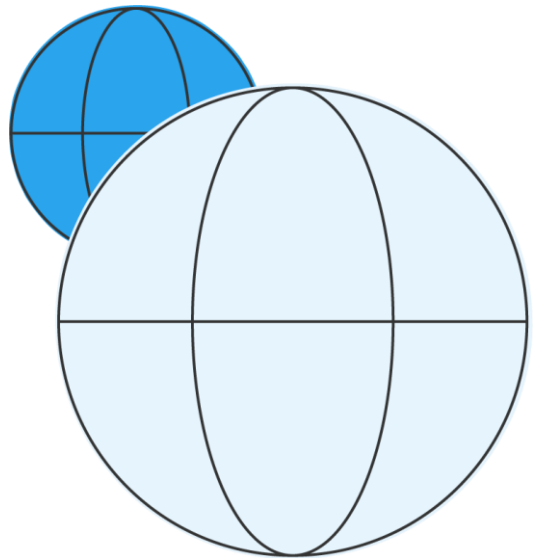
Real-time analysis tools

 **panel**



# Domain and Email Account

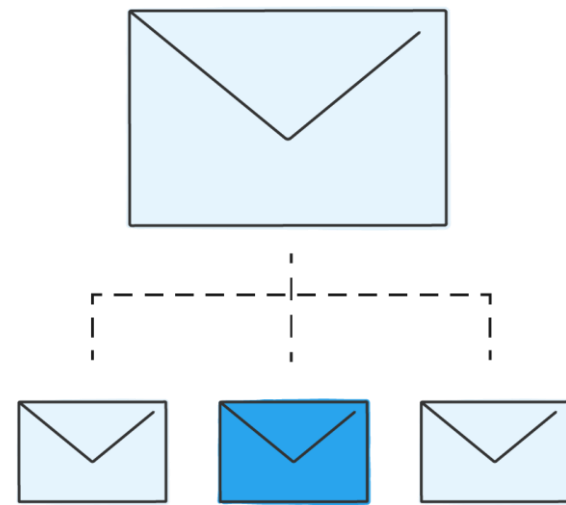
Create and manage your email accounts, grouped by domain, in total autonomy, setting the features that best meet the needs of your users for both domain and individual accounts.



- Set the space available for each account.
- Enable / disable POP, IMAP, SMTP and Webmail accesses.
- Set specific security policies by domain or single account.
- Choose the maximum number of daily mailings per single account.

# Domini alias and email alias

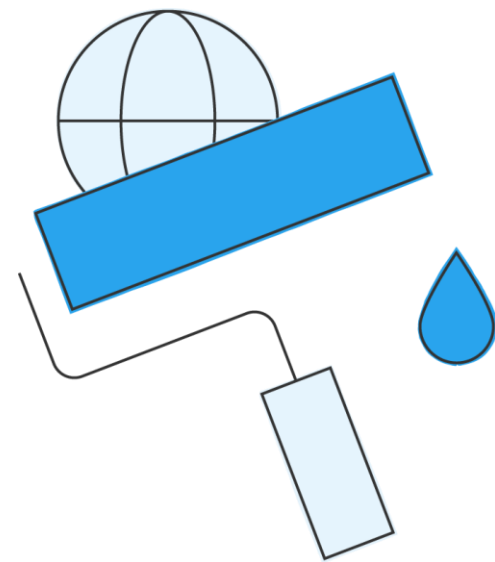
Create alias domains and email aliases to better manage your users' emails.



- Receive in your email account all the emails that are sent to the corresponding account of the alias domain.
- Create an alias email and enter up to 20 email addresses to which messages received by the alias will be forwarded.

# Customization

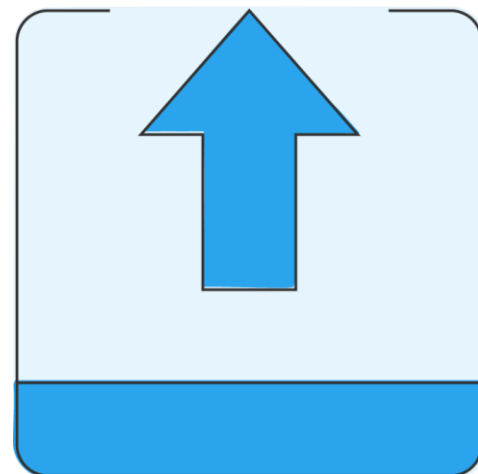
Give more value to your image or that of your customers, making the brands visible in our interfaces



- Customize the Panel and Webmail with your company logo
- Enter a logo for each domain
- Configure the White Label parameters
- Web Label to access Webmail and Panel with a custom URL
- Private Label to use the highest level of customization

# Imports and Migrations

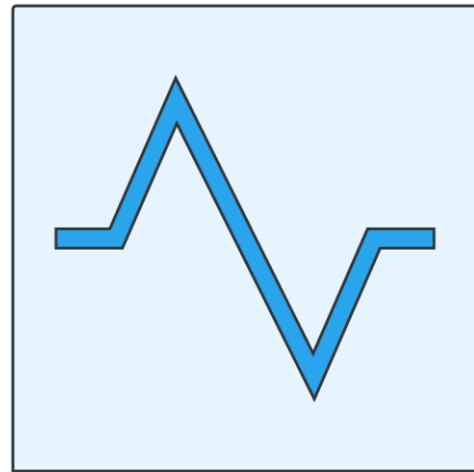
Creating email accounts and transferring their content has never been easier or faster.



- Make an import to massively create up to 250 domains, email accounts and aliases with a single CSV file
- Support of major hashes
- Schedule a migration to easily transfer all content from your email accounts
- Keep all your folders and their contents

# ETlive And Audit Log

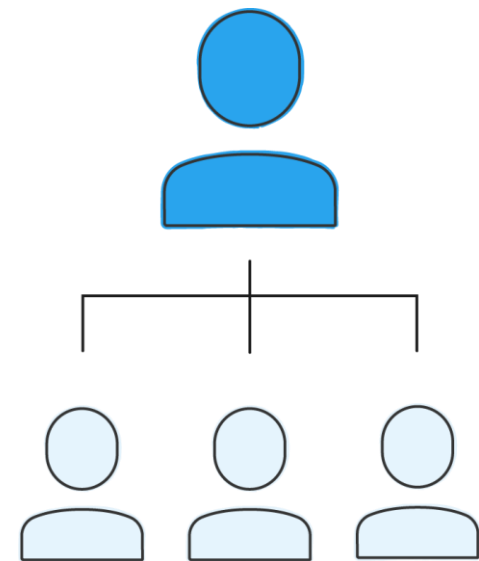
We give you the tools to monitor the activities carried out in the panel and to carry out a rapid analysis of your accounts in case of requests from your customers.



- Check at any time the status of delivery or sending of your email messages
- Check access to your email accounts
- Find out if the infected messages have been blocked by the antivirus
- Audit of all activities performed by the accounts accessing the panel

# Roles

Delegate the management of activities to a colleague or a consultant, assigning him a role and simplifying your work.



- Team Member to help you manage all your domains.
- Manager to delegate the management of certain domains.
- Postmaster to let his owner manage a domain.
- Delegate to allow an external user access to the archive of your accounts by choosing the limitations that you consider most appropriate.

# Security

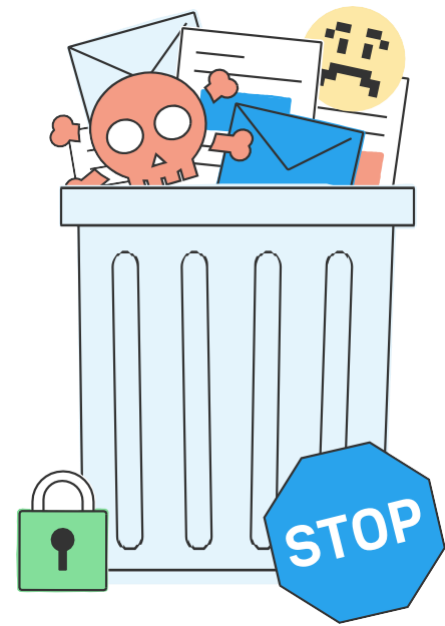
Choose the security level of your accounts by activating the different features available.



- Forza cambio password al primo accesso
- Force password change on first access
- Set password expiration
- Block old passwords reuse
- Disable password change
- Disable password recovery
- Force use two-factor authentication (OTP)
- Restrict access to authorized IP addresses
- Disable API access
- Add DKIM signature by domain

# Antispam and Antivirus

Don't let yourself be overwhelmed by spam. You only receive the emails you want.



- Antispam and Antivirus provided by specialized third parties
- Algorithms for calculating the reputation of the IP
- Decide on the sensitivity of the filter by choosing from 4 different levels
- Spam emails automatically removed after 30 days
- Whitelist and Blacklist settable by the user directly from Webmail
- Analysis of messages rejected or blocked by Etlive
- Antispam also in output to guarantee the best deliverability
- Notifications of suspicious items

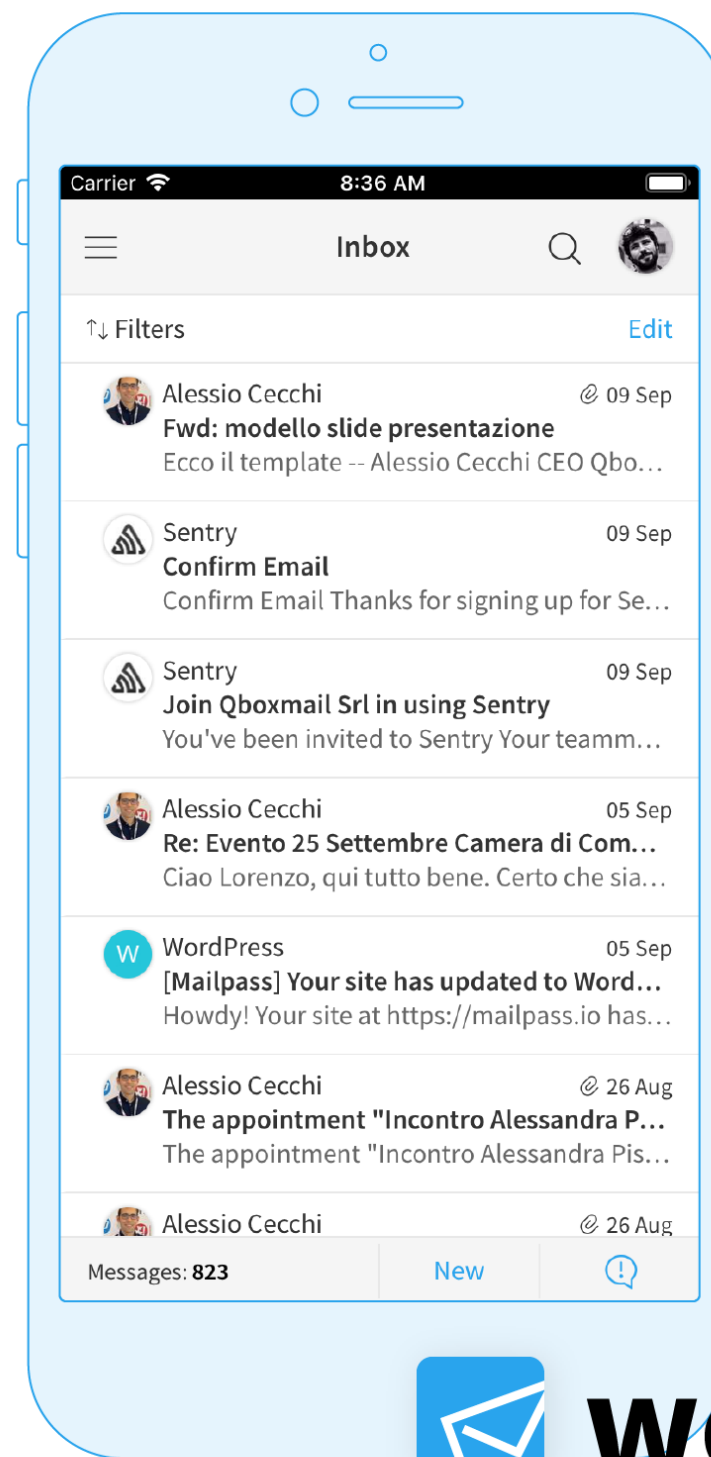


# With **Webmail** communicate anywhere with all your collaborators

Accounts always  
synchronized

Shared contacts  
and calendars

More security level



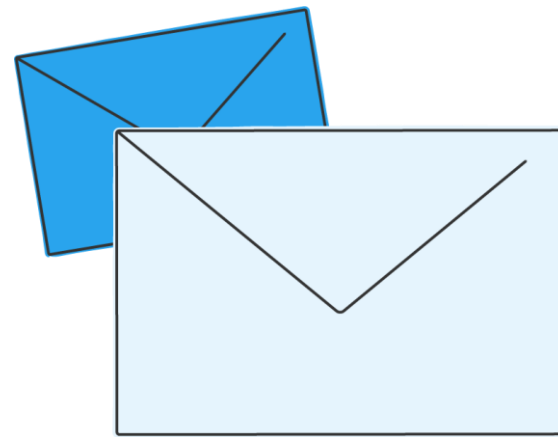
Filters and Autoresponder

Corporate contacts  
Filled in automatically

 **webmail**

# Mail

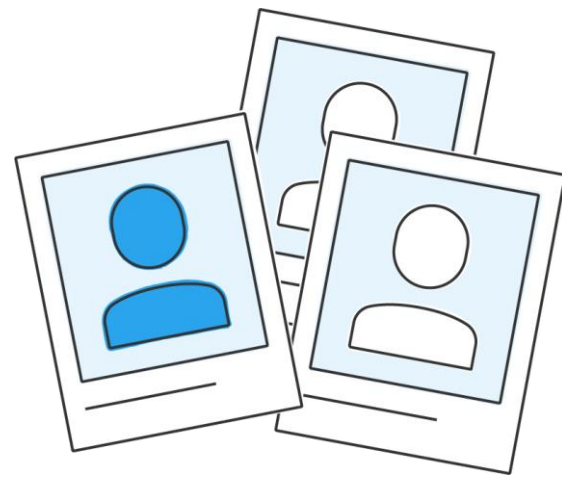
Read, send, organize and share your messages by selecting the settings you like best.



- Automatic identity management
- Folders shared between colleagues
- Assigning labels to emails
- 3 types of message display
- Filters and rules for organizing emails
- Set of delivery confirmations and reading messages
- Set the autoresponder and forward out of the office

# Contacts

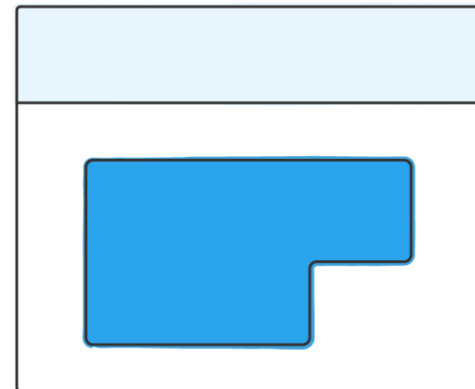
Add contacts, create, manage and share your address books organizing them according to your preferences.



- Create, share and subscribe to your address books
- Automatically save email addresses to which you send messages
- Corporate contacts always updated to connect with all your colleagues
- Import and export your contacts

# Calendar

Invite your contacts to events and organize your time in the best way.



- Create personal, individual and recurring events
- Invite participants to your events
- Check the presence of the guests at an event
- Free-busy to check user availability
- Create and manage your calendars
- Share calendars with your contacts
- Assign a label to an event
- Import and export your events

# Secure your messages with Archive

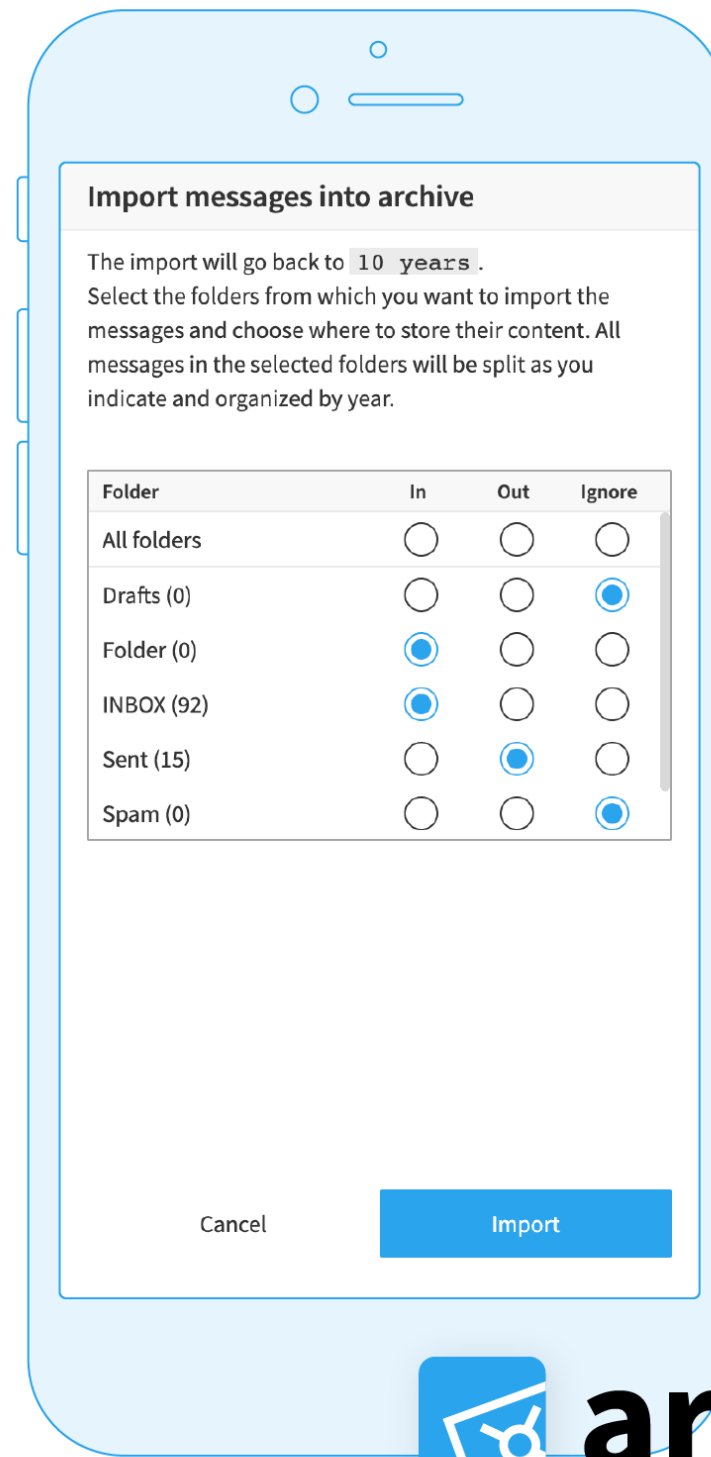
Automatic archiving

Unlimited space

GDPR compliance

Storage up to 10 years

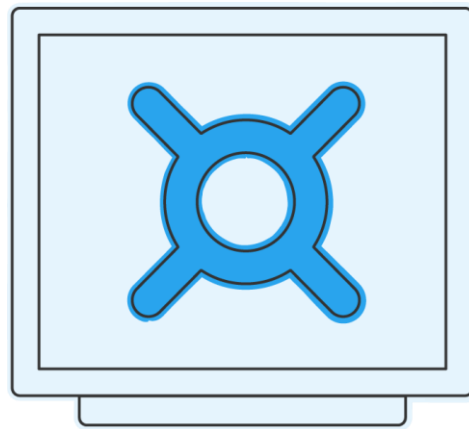
Quick search



 **archive**

# Archive

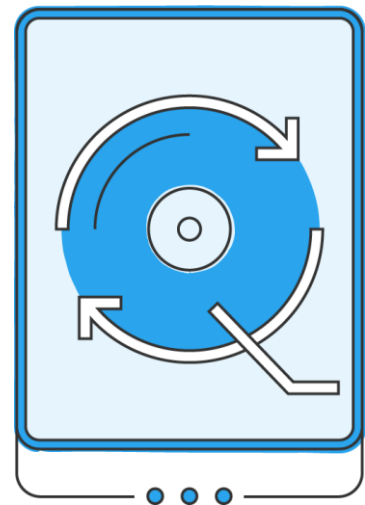
Email Archive is the tool to keep all your emails safe for 10 years, without worrying about the space occupied.



- Keep your email messages up to 10 years
- No space limit
- Access enabled for the user or a delegate
- Fast search thanks to full text indexing
- View the messagesource
- Highlight the most important messages
- Export individual messages
- Download the attachments
- Import the old messages in your account
- GDPR compliance

# Mail TimeMachine

With Mail Time Machine you can travel within your email account and go back in time up to 15 days.



- Daily backups of all your emails
- View the messages in your email account in the previous 15 days
- Recover up to 10 messages at a time that you have mistakenly deleted
- Request a total restore of your account to recover the entire contents

# A **plan** for every need

## **Basic**

For the company that wants quality service at the right price.

## **Professional**

For the company that needs to coordinate and communicate in a simple and intuitive way.

## **Enterprise**

For the organization that wants advanced communication tools and the most complete security policies.



Find out all the details on our website

[www.resellersbyte.com](http://www.resellersbyte.com)